



Process Systems International LLC

EVERYTHING IN STEEL

- DESIGN & DEVELOPMENT
- MANUFACTURING & TESTING
- QUALITY ASSURANCE



MICODA PROCESS SYSTEMS INTERNATIONAL

Micoda Process Systems International (MPSI) was established in 2006 in Abu Dhabi. Professionally managed and ISO 9001 certified, MPSI has grown into a workforce of over 200 happy employees working together towards excellency in quality and delivery.

MPSI provides a wide range of services in support of numerous industries including Oil & Gas Refineries, Well Testing, Petrochemical & Power Plants, Water Treatment and Infrastructure in the Middle East, Europe, South- East Asia and Latin America.

MPSI is approved with ADNOC Group of Companies and major EPC Contractors and Service companies across the world.

We are expert in Design & Engineering, Procurement, Manufacturing, Supply, Installation and Commissioning of Process Equipment and Process Packages.



VISION

- To be a world-class manufacturing company recognized for exceeding customer expectations while implementing the highest HHSEQ standards.



VALUES

- Health, Happiness, Safety, Environment and Quality must come first in everything we do in our business
- We will conduct our business at all times with Integrity, Transparency, strong Ethical Values and Commitment to serve.
- We believe that the most important asset of this company is its employees. Trust, Respect, Fairness, and Dignity shall be how we treat each other within the spirit of working together.

MISSION

- To work happily together towards the success of the Company.
- To set the highest industry standards of engineering and design.
- To continuously improve our capabilities and establish new market trends.





SERVICES

1

MANUFACTURING

- Pressure vessels, Storage Tanks with “U” & “U2” certification
- Pressure piping
- DNV / Non-DNV skid packages
- Process packages
- Separators
- In-direct bath heaters
- Burner booms & Flare stacks (Skid & Trailer mounted)
- Trailer mounted well testing units



2

SITE RELATED

- Erection & Commissioning of equipment, pipelines & modules
 - Supply of man power for any site related services
 - Site services including inspection, retrofit & refurbishment
-

3

REPAIR & REFURBISHMENT

- Repair works with R-stamp
 - Refurbishment of all well testing & process units
 - Retrofit solutions for any existing process unit
 - Maintenance service for equipment & packages
 - On-shore & Off-shore repair works
 - Cleaning & FAT services
-



4

TRADING

- Project based supplies
- Supply of operational & commissioning spares
- Bulk purchase from mills (project specific)



SECTORS

- OIL AND GAS
 - WATER TREATMENT
 - POWER & ENERGY
 - PETROCHEMICAL
 - MARINE & OFFSHORE
 - WELL TESTING EQUIPMENT
 - FOOD & DAIRY
 - PHARMACEUTICAL
 - FERTILIZER & CEMENT
 - SUPER CRITICAL & SUBSEA STRUCTURE
- 
- 

ACTIVITIES

- ENGINEERING
- PROJECT MANAGEMENT
- PROCUREMENT
- FABRICATION & ASSEMBLY
- SURFACE PREPARATION
- QUALITY
- FINAL INSPECTION & TESTING
- ERECTION & COMMISSIONING
- HSEQ / SAFETY



OUR ACCREDITATIONS

ASME U

Stamp

ASME U2

Stamp

ASME S

Stamp

NB-R

Stamp

CE

CE / PED

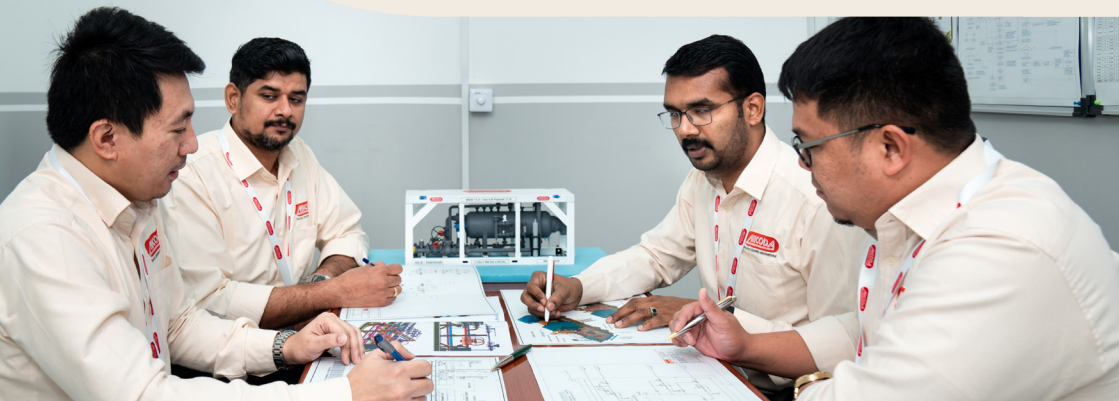


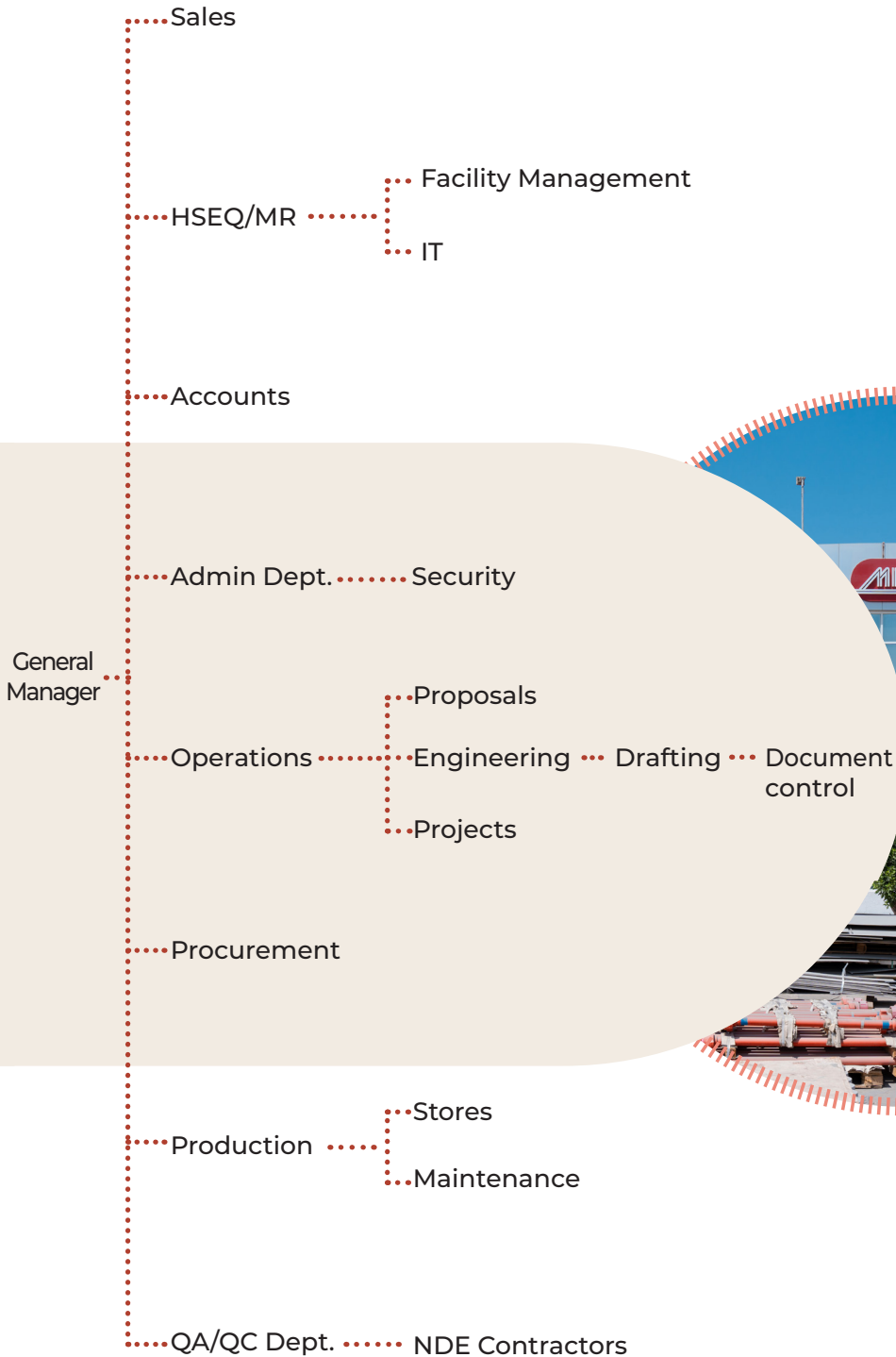
أوشاد
oshad

مركز أبوظبي للسلامة والصحة المهنية
ABU DHABI OCCUPATIONAL SAFETY AND HEALTH CENTER



TEAM STRENGTH





OPERATIONAL CAPACITY



45.76% [REV.03]
43.86% [REV.02]



ESTABLISHED IN **2006**,
MICODA IS A **100% UAE** OWNED COMPANY

MICODA operational bays are divided as value added centers under one roof.

OPERATION	CAPACITY (m²)	REMARKS
Cutting, Rolling & Bending	6000	
Fabrication ICAD facility #1	27000	Fabrication Bay 55000 m²
Fabrication ICAD facility #2	14000	
Fabrication facility (with ASME certification)	14000	
Painting	18000	
Storage	10000	

MICODA operation team's strength includes business partners as below.

PROPOSAL	PROCESS	ENGG	PROCUR.	PROD.	QA / QC	E&I	HSEQ	ERECTION
6	8 (C)	7	5	120	4	4	2	40 (C)

(C) Through contractor teams.
Based on project needs, we can mobilize appropriate manpower and required space within 30 days.

TECHNICAL CAPABILITY

IN-HOUSE

PV Elite®
PRESSURE VESSEL ANALYSIS

CODEWARE®
COMPRESS®



A **AUTOCAD**

I **AUTODESK®**
INVENTOR®

CONTRACTORS

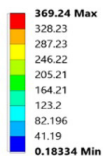
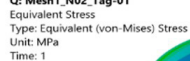
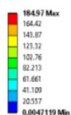
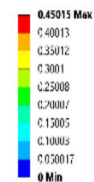
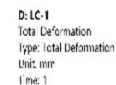
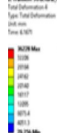


 **Tekla®**
Structures

INTERGRAPH®
CAESAR II®


aspentech™
HYSYS

SAMPLE ANALYSIS





PRODUCTS



SEPARATORS



SEPARATORS

- 2-3-4 PHASE SEPARATION PACKAGES
- HORIZONTAL & VERTICAL
- UP TO 3000 PSI WORKING PRESSURE
- INCLUDING PROCESS DESIGN & GUARANTEE
- INTERNAL LINING : GLASS FLAKE / BELZONA / CHEMFLAKE
- THICKNESS RANGES: 50 mm & 80 mm
- CUSTOMIZED DESIGN AS PER PROCESS REQUIREMENT



PRESSURE VESSELS



PRESSURE VESSELS

- DESIGN & CONSTRUCTION AS PER ASME U & U2
- MATERIALS: CARBON STEEL, SS 304L/316L, DUPLEX, SUPER DUPLEX & HIGH ALLOYS
- ALLOY CLADDING (ALLOY 625 / 825)
- INTERNAL COATING : GLASS FLAKE / PAINTING / DERAKANE / RUBBER LINING
- CE MARKING (PED) AS PER PROJECT REQUIREMENT



TANKS



TANKS

- DESIGN, ENGINEERING & CONSTRUCTION AS PER CODES
- FRAC TANKS, STORAGE TANKS & PRESSURIZED TANKS
- INTERNAL LINING: PAINTING / GLASS FLAKE / RUBBER LINING
- SITE / SHOP FABRICATED INCLUDING ERECTION



HEATERS



HEATERS

- INDIRECT HEATERS
- UP TO 8 MMBTU / HR
- UP TO 15000 PSIG
- SCOPE: PROCESS DESIGN, ENGINEERING, MANUFACTURING AND SUPPLY
- SKID MOUNTED & TRAILER MOUNTED
- DNV CERTIFIED
- RETROFIT / REFURBISHMENT SERVICES



TRAILER PACKAGES

- AUTOMATED WELL TESTING TRAILER MOUNTED PACKAGE
- PROCESS & UTILITY TRAILERS
- REMOTELY CONTROLLED OPERATION WITH SCADA SYSTEMS

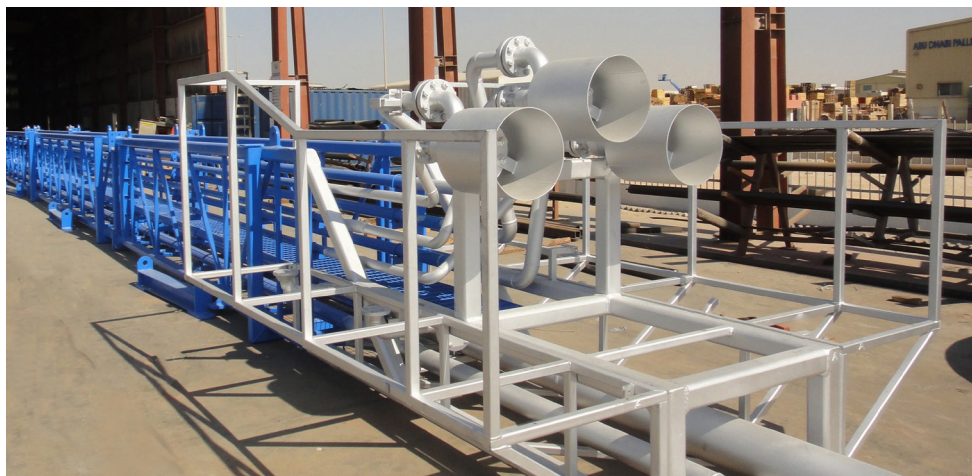


FLARE STACKS

- FOLDABLE TWO PART BOOM
- SELF STANDING
- FASTER RIG-UP / RIG-DOWN
- TRAILER / SKID MOUNTED



BURNERS



BURNERS

- ON-SHORE / OFF-SHORE BURNER BOOMS
- 1440 PSIG & 2160 PSIG
- PROCESS DESIGN & GUARANTEE
- DNV CERTIFIED
- ASSEMBLY & FAT



PRESSURE PIPING MODULES



PRESSURE PIPING MODULES

- PRESSURE PIPING UP TO 15000 PSIG
- MATERIAL: CARBON STEEL, SS 304 L / 316L, DUPLEX, SUPER DUPLEX & HIGH ALLOY
- DESIGN, PROCUREMENT, FABRICATION, TESTING & SURFACE PREPARATION
- ASSEMBLY & INSTALLATION



KNOCKOUT DRUMS



KNOCKOUT DRUMS

- DESIGN & CONSTRUCTION AS PER ASME U & U2
- MATERIALS: CARBON STEEL, SS 304L/316L, DUPLEX, SUPER DUPLEX & HIGH ALLOYS
- INTERNAL COATING : GLASS FLAKE / PAINTING
- ASSEMBLY & INSTALLATION



MANIFOLDS



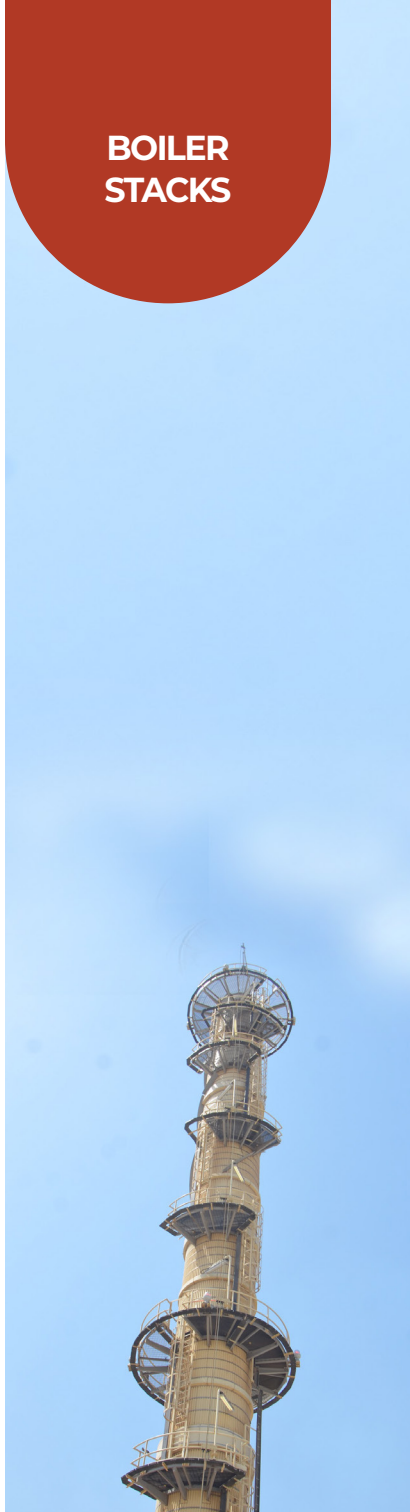
- PRESSURE PIPING UP TO 15000 PSIG
- MATERIAL: CARBON STEEL, SS 304 L / 316L, DUPLEX, SUPER DUPLEX & HIGH ALLOY

MANIFOLDS



- DESIGN, PROCUREMENT, FABRICATION, TESTING & SURFACE PREPARATION
- ASSEMBLY & INSTALLATION

BOILER STACKS



BOILER STACKS

- INCLUDING REFRACTORY LINING
- 165FT +
- ASSEMBLY & FAT



MAJOR CLIENTS

aramco



شركة تنمية نفط عُمان
Petro Development Oman

دبي للبترول
Dubai Petroleum



سابك
sabik

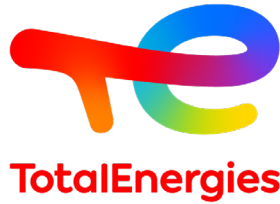
بروج
Borouge



Petroperú



MAJOR CLIENTS



CONTACTS

PHONE +971 2 550 2858

FAX +971 2 550 2846

EMAIL info@micodapsi.com

WEBSITE www.micodapsi.com

LINKEDIN [Micoda Process Systems](#)

ADDRESS Plot 6 & 7, Sector M41 C1, ICAD 1, UAE



SCAN ME